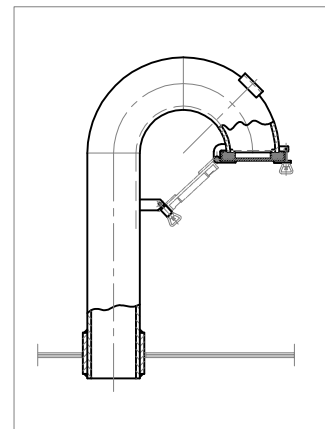
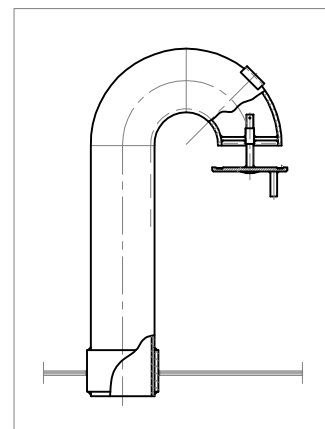


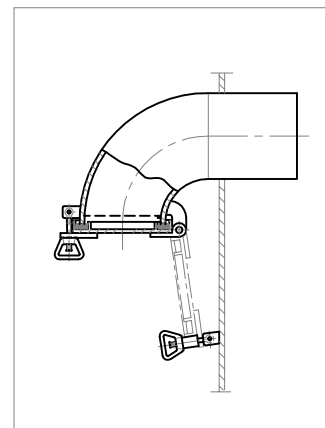
Ventilation goose neck heads GN



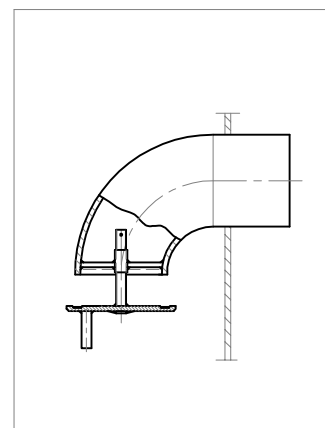
Ventilation goose neck heads GL



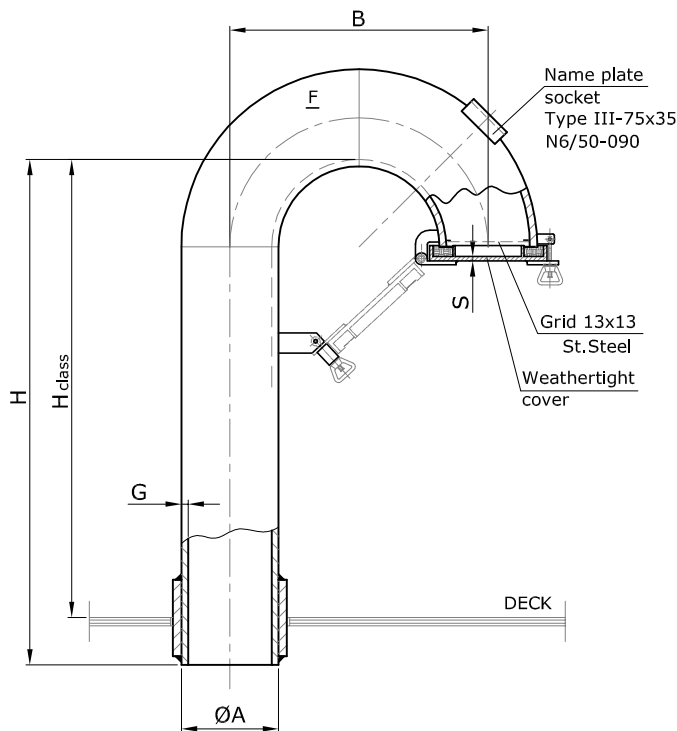
Bulkhead vents VN



Bulkhead vents VL



DN	ØAxG	B	F	S	ØC
50	60,3x6,3	152	6,3	4	76,1x7,1
65	76,1x6,3	190	6,3	4	90,6x6,3
80	88,9x6,3	228	6,3	4	101,6x5
100	114,3x8	304	8	4	133,6x8,8
125	139,7x8,8	362	8,8	4	161,5x10
160	168,3x8,8	458	8,8	5	193,7x12
200	219,1x10	610	8,8	5	245,7x11
250	273x10	762	8,8	5	299,5x12,5
315	323,9x10	914	8,8	5	350,5x12,5



1. DESTINATION

Ventilation goose neck heads GN are destined for installation in forced and natural ventilation systems and venting of void spaces on seagoing ships as well as on offshore objects.

2. SIZES AND TYPES

EXECUTIONS: Z - with weathertight cover

N - without closing device

TYPES:

A - with reinforcing sleeve

B - with reinforcing sleeve and with spiral pipe connection

C - without reinforcing sleeve

D - without reinforcing sleeve and with spiral pipe connection

E - with reinforcing flange

MATERIAL:

St - steel R35

3. MATERIAL

Pipe and elbows made of steel and fitted with brass swing nuts.

Bolts and pins are made of stainless steel.

Gasket - rubber profile.

4. SURFACE TREATMENT

Hot dip galvanised. Painted with epoxy marine paint SWA 7423-014-250 on request.

5. MARKING:

Dimension 'H' to be specified by the Customer.

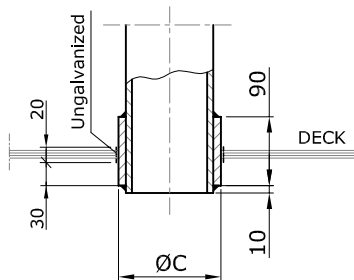
Conformity of 'H class' with ILL 1966, depending on position of head to be observed.

Marking of GN head of DN=125 mm, of height H=900 mm, with weathertight cover Z and of A type:

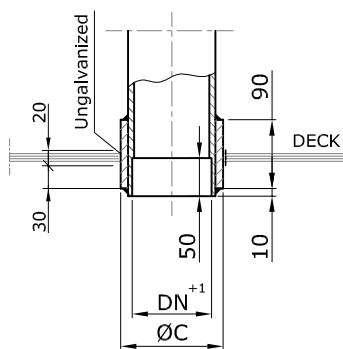
VENTILATION HEAD GN 125-900-ZA-St

Heads with dimension B=2xØA on request.

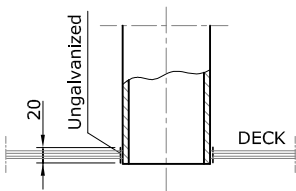
Type A



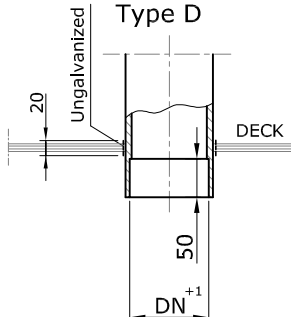
Type B



Type C

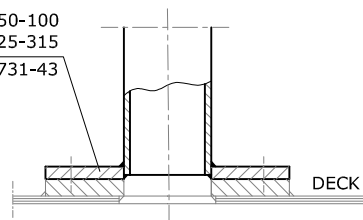


Type D



Type E

Flange B6 for DN50-100
Flange B16 for DN125-315
acc. BN-97/3731-43



DN	ØAxG	B	F	ØC
50	60,3x6,3	152	6,3	76,1x7,1
65	76,1x6,3	190	6,3	90,6x6,3
80	88,9x6,3	228	6,3	101,6x5
100	114,3x8	304	8	133,6x8,8
125	139,7x8,8	362	8,8	161,5x10
160	168,3x8,8	458	8,8	193,7x12
200	219,1x10	610	8,8	245,7x11
250	273x10	762	8,8	299,5x12,5
315	323,9x10	914	8,8	350,5x12,5

1. DESTINATION

Ventilation goose neck heads GL are destined for installation in forced and natural ventilation systems and venting of void spaces on seagoing ships as well as on offshore objects.

2. SIZES AND TYPES

EXECUTIONS: Z - with weathertight cover
N - without closing device

TYPES: A - with reinforcing sleeve
B - with reinforcing sleeve and with spiral pipe connection
C - without reinforcing sleeve
D - without reinforcing sleeve and with spiral pipe connection
E - with reinforcing flange

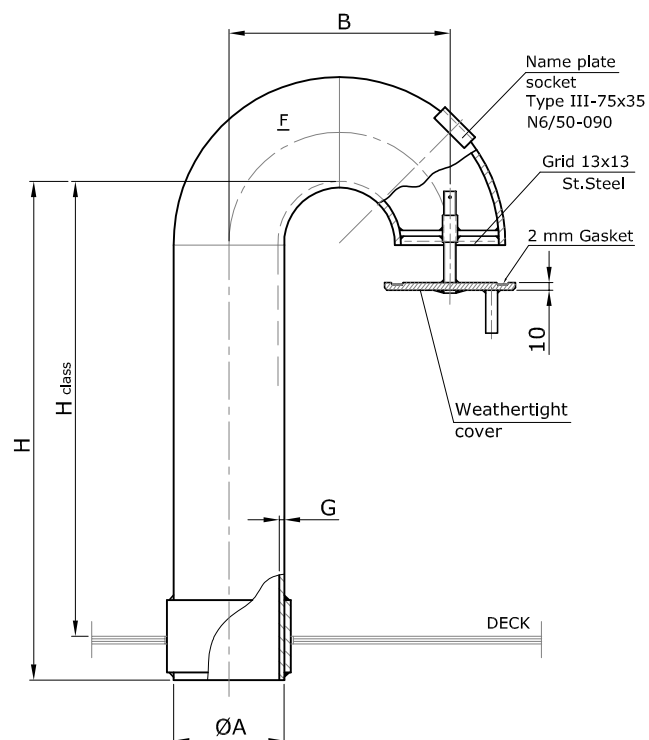
MATERIAL: St - steel R35

3. MATERIAL

Pipe and elbows made of steel.

Bolts and sleeves are made of stainless steel.

Gasket - rubber profile.



4. SURFACE TREATMENT

Hot dip galvanised. Painted with epoxy marine paint SWA 7423-014-250 on request.

5. MARKING:

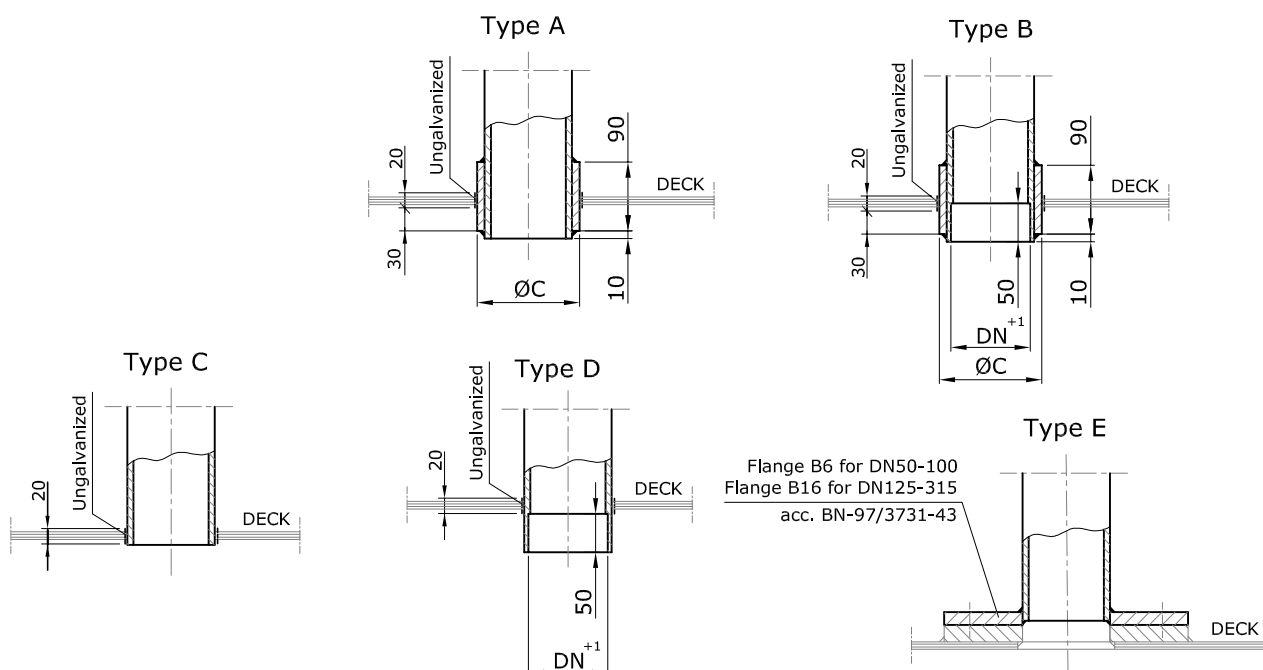
Dimension 'H' to be specified by the Customer.

Conformity of 'H class' with ILL 1966, depending on position of head to be observed.

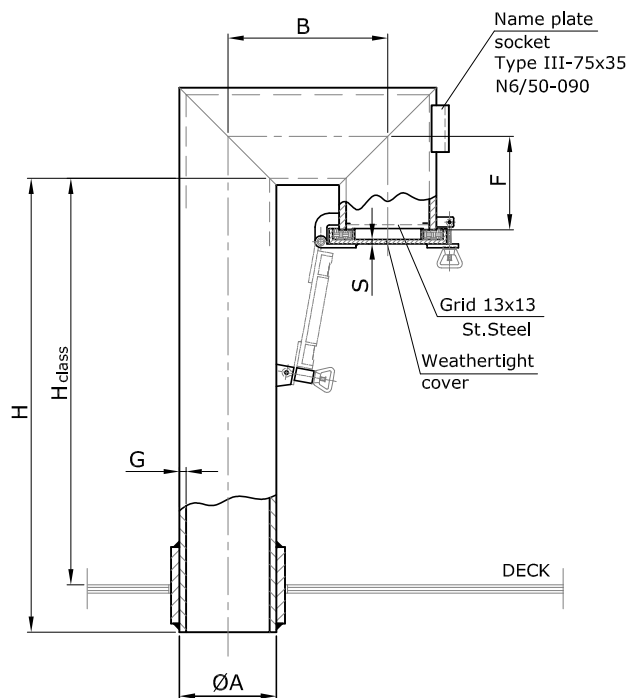
Marking of GL head of DN=125 mm, of height H=900 mm, with weathertight cover Z and of A type:

VENTILATION HEAD GL 125-900-ZA-St

Heads with dimension B=2xØA on request.



DN	ØAxG	B	G	F	S	ØC
50	60,3x6,3	100	6,3	90	4	76,1x7,1
65	76,1x6,3	120	6,3	100	4	90,6x6,3
80	88,9x6,3	135	6,3	110	4	101,6x5
100	114,3x8	150	8	120	4	133,6x8,8
125	139,7x8,8	180	8,8	130	4	161,5x10
160	168,3x8,8	220	8,8	150	5	193,7x12
200	219,1x10	280	8,8	170	5	245,7x11
250	273x10	380	8,8	200	5	299,5x12,5
315	323,9x10	440	8,8	230	5	350,5x12,5



1. DESTINATION

Ventilation goose neck heads GS are destined for installation in forced and natural ventilation systems and venting of void spaces on seagoing ships as well as on offshore objects.

2. SIZES AND TYPES

EXECUTIONS: Z - with weathertight cover

N - without closing device

TYPES:

A - with reinforcing sleeve

B - with reinforcing sleeve and with spiral pipe connection

C - without reinforcing sleeve

D - without reinforcing sleeve and with spiral pipe connection

E - with reinforcing flange

MATERIAL:

St - steel R35

3. MATERIAL

Pipe and elbows made of steel and fitted with brass swing nuts.

Bolts and pins are made of stainless steel.

Gasket - rubber profile.

4. SURFACE TREATMENT

Hot dip galvanised. Painted with epoxy marine paint SWA 7423-014-250 on request.

5. MARKING:

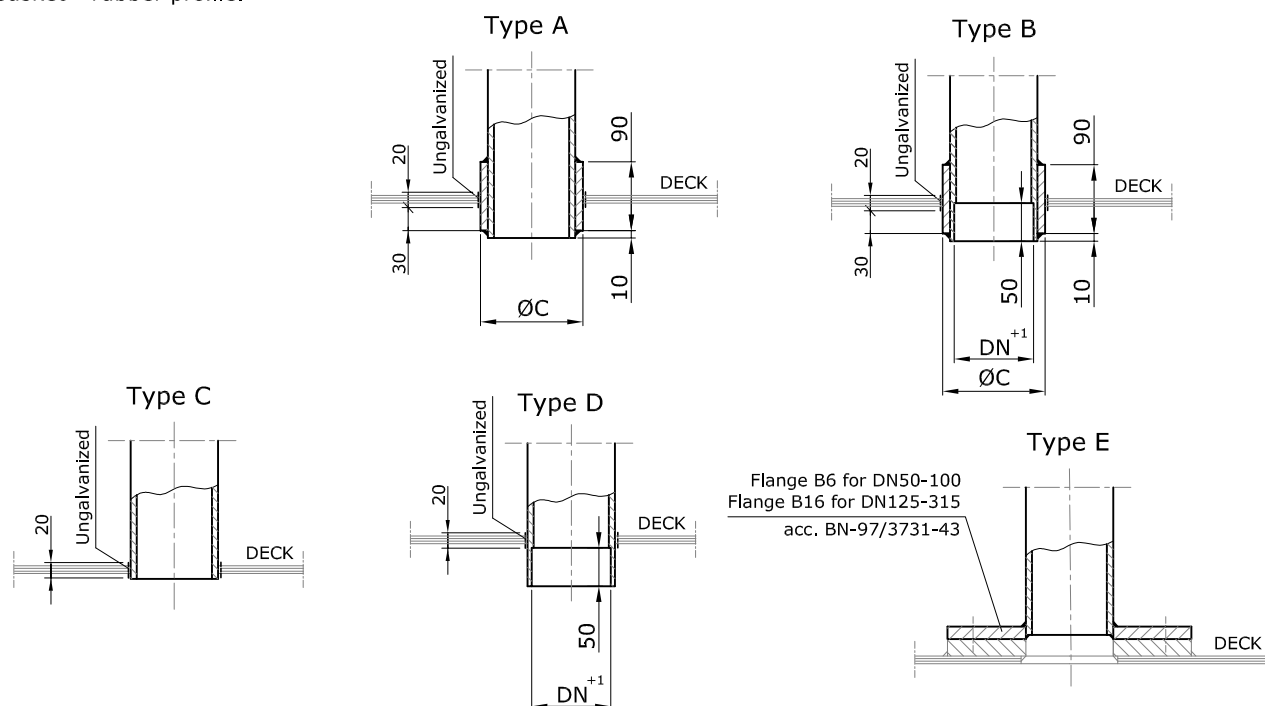
Dimension 'H' to be specified by the Customer.

Conformity of 'H class' with ILL 1966, depending on position of head to be observed.

Marking of GS head of DN=125 mm, of height H=900 mm, with weathertight cover Z and of A type:

VENTILATION HEAD GS 125-900-ZA-St

Heads made of aluminium PA2 on request.



AxB	C	D	R	S	T
100x200	595	190	162	5	9
125x250	695	240	189	5	9
200x200	595	190	162	5	9
300x300	805	290	216	6	10
400x400	1005	390	267	6	10
500x500	1215	490	321	6	10
600x600	1415	590	372	7	10

1. DESTINATION

Ventilation goose neck heads GR are destined for installation in forced and natural ventilation systems and venting of void spaces on seagoing ships as well as on offshore objects.

Construction is based on standard DIN 82340.

2. SIZES AND TYPES

EXECUTIONS: Z - with weathertight cover
 N - without closing device

3. MATERIAL

Housing made of mild steel St3Sx.

Swing-out nuts made of brass.

Bolts and pins are made of stainless steel.

Gasket - rubber profile.

4. SURFACE TREATMENT

Hot dip galvanised. Painted with epoxy marine paint SWA 7423-014-250 on request.

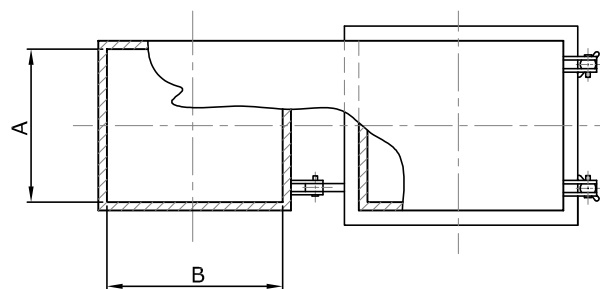
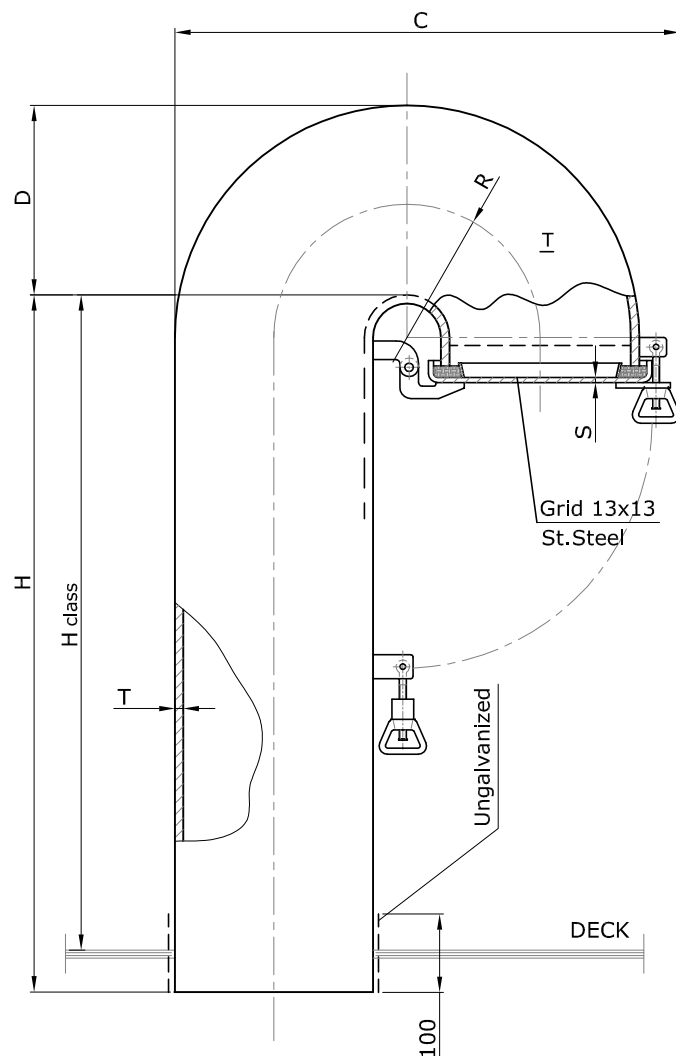
5. MARKING:

Dimension 'H' to be specified by the Customer.

Conformity of 'H class' with ILL 1966, depending on position of head to be observed.

Marking of GR head of AxB=100x200 mm, of height H=950 mm, with weathertight cover Z:

VENTILATION HEAD GR 100x200-950-Z



DN	ØAxG	H	F	S	P
80	88,9x6,3	114	4	4	135
100	114,3x8	152	4,5	4	160
125	139,7x8,8	181	4,5	4	190
160	168,3x8,8	229	4,5	5	230
200	219,1x10	305	4,5	5	280
250	273x10	381	6,3	5	350
315	323,9x10	457	8,8	5	420

1. DESTINATION

Bulkhead vents VN are destined for installation in forced and natural ventilation systems of of seagoing ships and offshore objects. They are provided with weathertight cover and shall be fitted on external walls.

2. SIZES AND TYPES

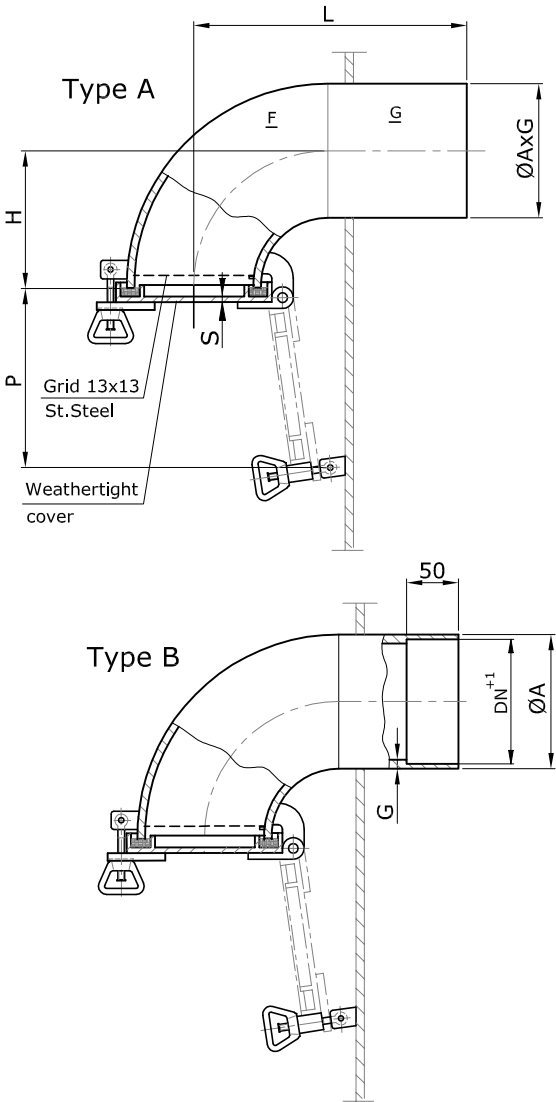
- EXECUTIONS:
- Z - with weathertihgt cover
N - without closing device
- TYPES:
- A - without spiral pipe connection
B - with spiral pipe connection
- MATERIAL:
- St - steel R35

3. MATERIAL

Pipe and elbows made of steel and fitted with brass swing nuts.
Bolts and pins are made of stainless steel.
Gasket - rubber profile.

4. SURFACE TREATMENT

Painted with epoxy marine paint
SWA 7423-014-250. Hot dip galvanised on request.



5. MARKING:

Dimension 'L' to be specified by the Customer.
Marking of VN bulkhead vent of DN=125 mm, of length L=200, with weathertight cover Z and of A type:

BULKHEAD VENT VN 125-200-ZA-St

Vents with dimension H=ØA on request.

DN	ØAxG	H	F	ØD	P
80	88,9x6,3	114	4	114	120
100	114,3x8	152	4,5	150	130
125	139,7x8,8	181	4,5	175	145
160	168,3x8,8	229	4,5	320	165
200	219,1x10	305	4,5	270	190
250	273x10	381	6,3	320	220
315	323,9x10	457	8,8	390	260

1. DESTINATION

Bulkhead vents VL are destined for installation in forced and natural ventilation systems of of seagoing ships and offshore objects. They are provided with weathertight rotating lid and shall be fitted on external walls.

2. SIZES AND TYPES

EXECUTIONS: Z - with weathertihgt cover
N - without closing device

TYPES: A - without spiral pipe connection
B - with spiral pipe connection

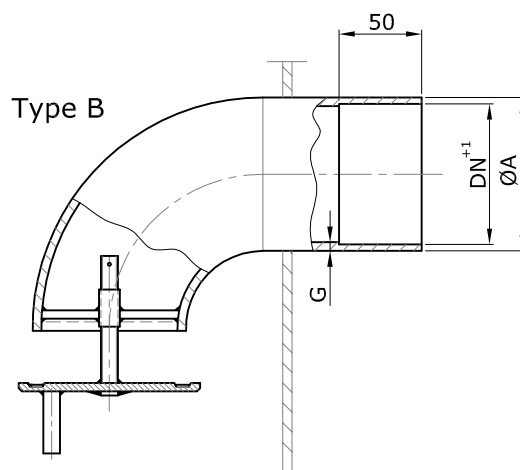
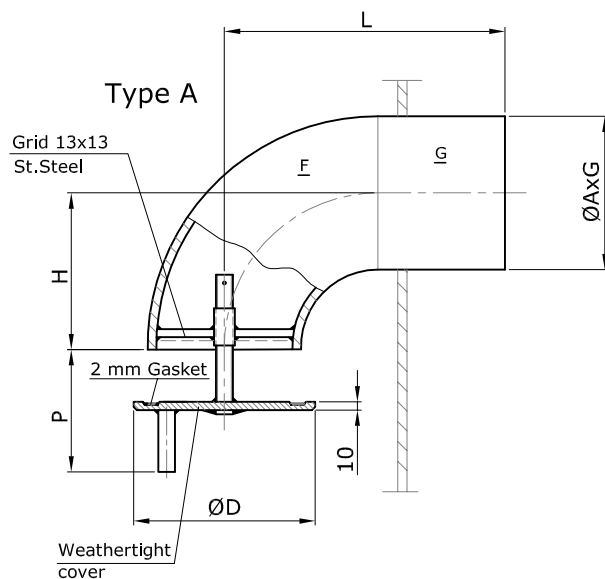
MATERIAL: St - steel R35

3. MATERIAL

Pipe and elbows made of steel.
Bolts and sleeves are made of stainless steel.
Gasket - rubber profile.

4. SURFACE TREATMENT

Painted with epoxy marine paint
SWA 7423-014-250. Hot dip galvanised
on request.



5. MARKING:

Dimension 'L' to be specified by the Customer.
Marking of VL bulkhead vent of DN=125 mm,
of length L=200, with weathertight cover Z
and of A type:

BULKHEAD VENT VL 125-200-ZA-St

Vents with dimension H=ØA on request.

DN	ØAxG	H	F	S	P
80	88,9x6,3	110	4	4	135
100	114,3x8	120	4,5	4	160
125	139,7x8,8	135	4,5	4	190
160	168,3x8,8	155	4,5	5	230
200	219,1x10	180	4,5	5	280
250	273x10	195	6,3	5	350
315	323,9x10	230	8,8	5	420

1. DESTINATION

Bulkhead vents VS are destined for installation in forced and natural ventilation systems of seagoing ships and offshore objects. They are provided with weathertight cover and shall be fitted on external walls.

2. SIZES AND TYPES

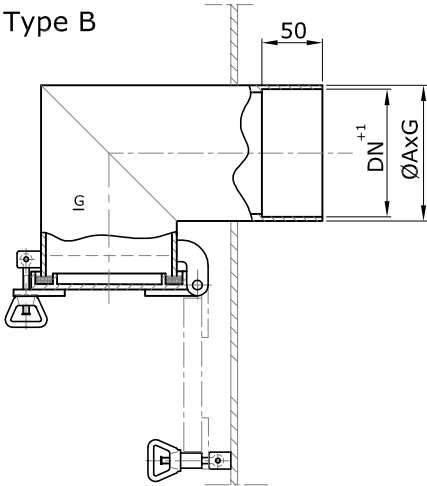
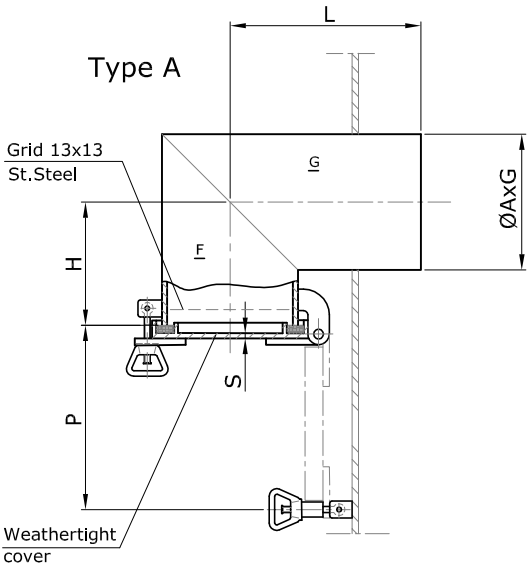
- EXECUTIONS: Z - with weathertihgt cover
 N - without closing device
- TYPES: A - without spiral pipe connection
 B - with spiral pipe connection
- MATERIAL: St - steel

3. MATERIAL

Pipe and elbows made of steel and fitted with brass swing nuts.
Bolts and pins are made of stainless steel.
Gasket - rubber profile.

4. SURFACE TREATMENT

Painted with epoxy marine paint
SWA 7423-014-250. Hot dip galvanised on request.



5. MARKING:

Dimension 'L' to be specified by the Customer.
Marking of VS bulkhead vent of DN=125 mm, of length L=200, with weathertight cover Z and of A type:

BULKHEAD VENT VS 125-200-ZA-St

Heads made of aluminium PA2 on request.

DN	ØAxG	H	ØD	P
80	90x5	114	114	120
100	100x5	152	150	130
125	135x5	181	175	145
160	170x5	229	320	165
200	210x5	305	270	190
250	260x5	381	320	220
315	325x5	457	390	260

1. DESTINATION

Bulkhead vents VA are destined for installation in forced and natural ventilation systems of of seagoing ships and offshore objects. They are provided with weathertight rotating lid and shall be fitted in external aluminium walls.

2. SIZES AND TYPES

EXECUTIONS: Z - with weathertihgt cover
N - without closing device

TYPES: A - without spiral pipe connection
B - with spiral pipe connection

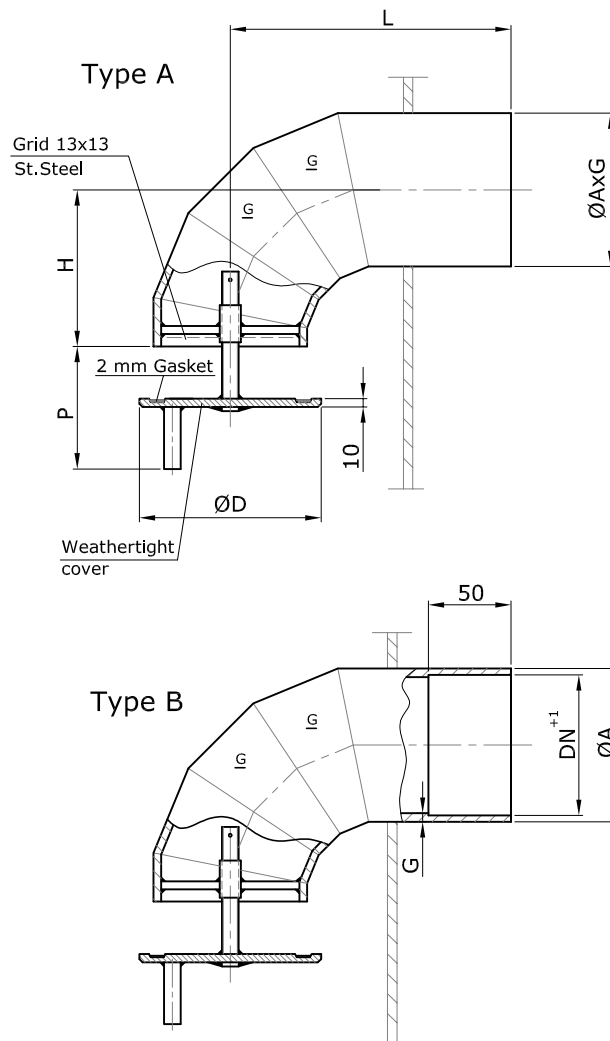
MATERIAL: Al - aluminium PA2

3. MATERIAL

Pipe are made of PA2 aluminium.
Bolts and sleeves are made of stainless steel.
Gasket - rubber profile.

4. SURFACE TREATMENT

Not painted.



5. MARKING:

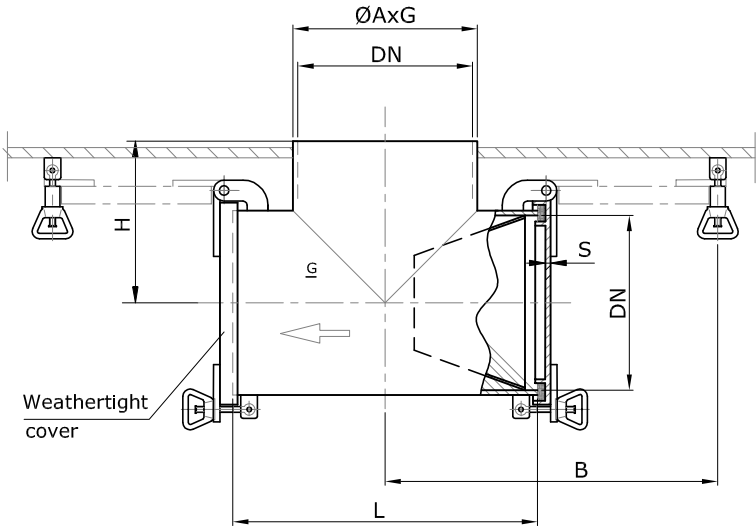
Dimension 'L' to be specified by the Customer.
Marking of VA bulkhead vent of DN=125 mm, of length L=200, with weathertight cover Z and of A type:

BULKHEAD VENT VA 125-200-ZA-AI

Heads with dimension H=ØA on request.

DN	100	125	160
ØAxG	100x5	135x5	170x5
H	140	155	170
L	210	240	270
S	210	240	270
B	150	175	210

Weight, kg	Exec.Z	St	3,6	5,3	8,4
		Al	1,4	2,2	3,5
	Exec.N	St	4,2	6,5	10,3
		Al	1,8	2,7	4,3



1. DESTINATION

Bulkhead ejector vents EO are destined for installation in natural ventilation systems of seagoing ships and offshore objects.

They shall be fitted in vertical steel or aluminium bulkheads with ejector axis always in horizontal position.

2. SIZES AND TYPES

- EXECUTIONS: Z - with weathertihgt cover
 N - without closing device
- MATERIAL: St - steel St3Sx
 Al - aluminium PA2

3. MATERIAL

Pipes made of steel or aluminium and fitted with brass swing nuts. Bolts and pins are made of stainless steel.

Gasket - rubber profile.

4. SURFACE TREATMENT

Painted with epoxy marine paint
SWA 7423-014-250. Hot dip galvanised on request.

Ejector vents made of aluminium are without any surface treatment.

5. MARKING:

of ejector bulkhead vent EO on nominal diameter
DN=125 mm, of execution Z and made of steel St:

EJECTOR VENT EO 125-Z-St

Set of swing nuts for fixing of covers in opened position included.

Type	DN	ØA	ØB	ØD	nxØd mm	F	S	Hmax	Weight kg
CVH 100	100	180	146	200	4x9,5	4	2	120	3
CVH 130	130	200	169	235	4x11,5	4	3	150	3,6
CVH 150	150	230	200	275	4x14	4	3	160	5
CVH 200	200	280	244	375	4x14	4	3	250	10
CVH 250	250	330	295	460	6x14	6	3	250	15
CVH 300	300	380	350	550	6x14	8	4	250	25

1. DESTINATION

The cabin ventilator heads CVH are destined for installation in forced or natural ventilation systems of seagoing ships and offshore objects. They are provided with the weathertight rotating lid.

2. SIZES AND TYPES

SIZES: see table

MATERIAL: St - steel St3Sx
Al - aluminium PA2

3. MATERIAL

Spindle made of brass, packing - rubber profile.

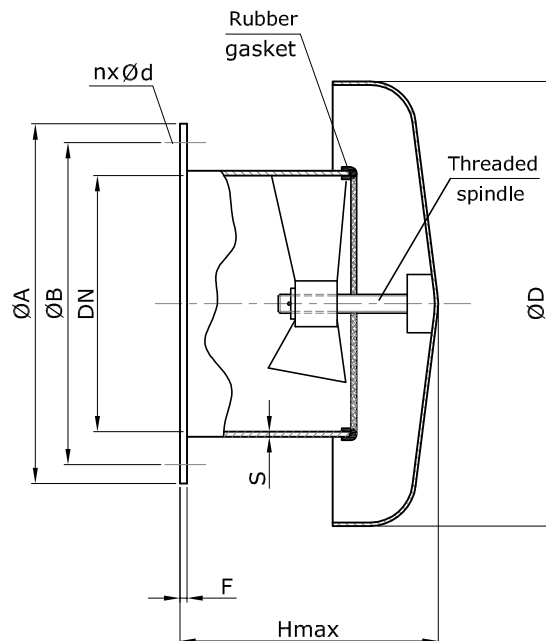
4. SURFACE TREATMENT

Hot dip galvanised.
Painting with epoxy primer SWA 7423-014-250 on request.
Ventilators made of aluminium are without any surface treatment.

5. MARKING:

of cabin ventilator head on nominal diameter
DN=200 mm and made of steel St:

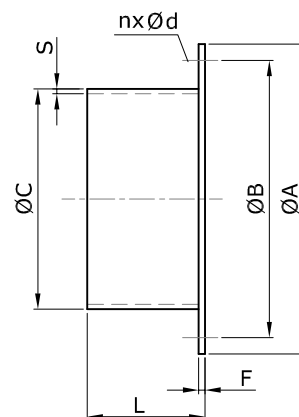
CABIN VENTILATOR CVH 200-St



6. ACCESSORIES

Transition flange F-TFC

Type	ØC mm	S	Weight kg
F-TFC 100	114,3	3,6	2,9
F-TFC 130	139,7	4,0	3,6
F-TFC 150	168,3	4,5	5
F-TFC 200	219,1	5,9	7,8
F-TFC 250	287	6,0	9,3
F-TFC 300	324	6,0	11,4



Destined for fitting of CVH cabin ventilator head to a steel bulkhead. Made of R35 mild steel. Made of aluminium available on request.
Dimension 'L' to be specified by thr Customer.

1. DESTINATION

The pressure relief valves GRV are destined for release of air or other gases from the ship's compartments being flooded, in case of fire, with CO₂, inegen or other expanding gases.

They prevent the compartments' structure against being damaged by excessive pressure when fire fighting medium is released.

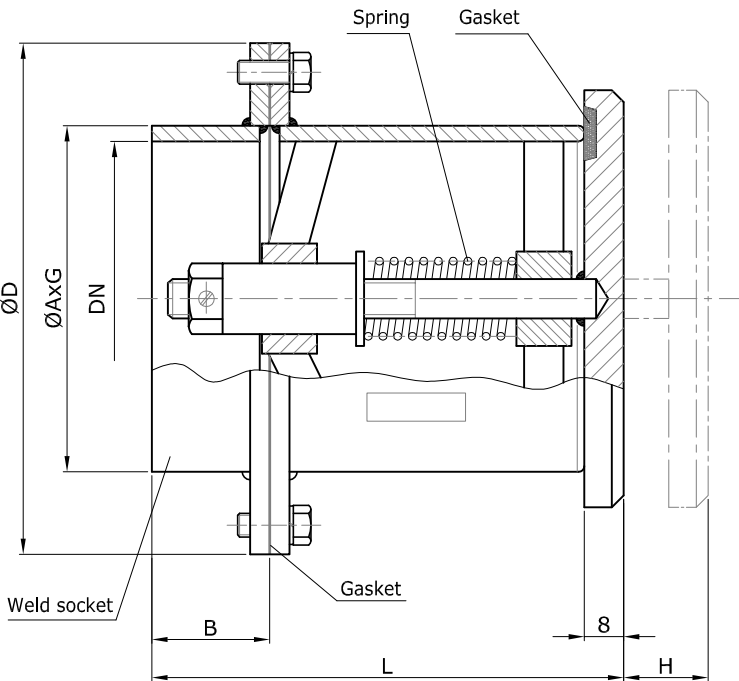
Factory set-up of opening pressure of valve is 0,2 bar +/- 10%.

Other adjustments on request.

2. FUNCTIONNING

The cover of valve kept in closed postion by means of spring tightened suitably to requred release pressure.

In case of excessive pressure inside the valve opens until pressure difference is less than 0,2 bar.



Type	DN	ØAxG	ØD	B	H _{max}	L	Weight
							kg
GRV 80	80	88,9x4	130	30	26	128	1,9
GRV 100	100	108x4	150	40	32	158	2,8
GRV 125	125	133x4	180	45	40	195	3,8

6. MARKING:

of gas relief valve GRV of nominal diameter
DN=100 mm:

RELIEF VALVE GRV-100

DN	ØAxG	L	ØD	H	P
80	90x5	80	114	30	90
100	100x5	100	150	40	100
125	135x5	100	175	50	100
160	170x5	120	320	60	120
200	210x5	120	270	70	120
250	260x5	150	320	80	150
315	325x5	150	390	90	150

1. DESTINATION

Bulkhead transfer valves BTV are destined for installation at sheltered vertical partitions of compartments on seagoing ships as well on shore objects.

They are mainly used as air release valve, may be however used as supply units as well.

2. SIZES AND TYPES

SIZES: see table

3. MATERIAL

Valve body made of mild steel.

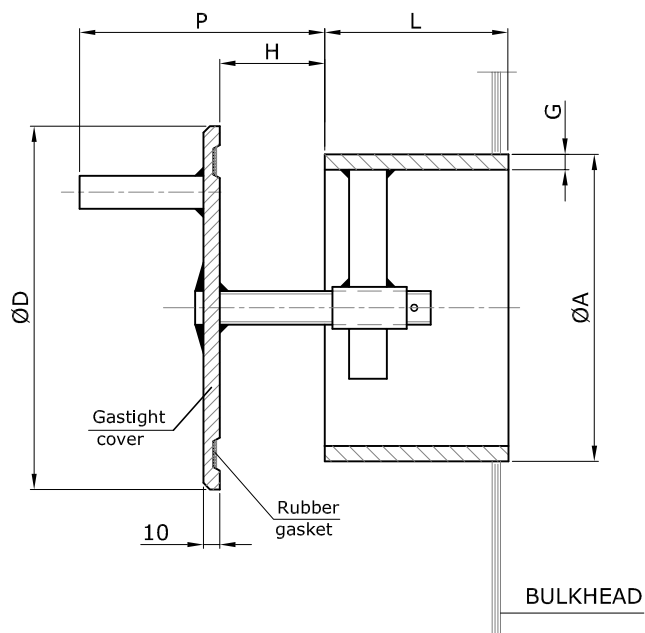
Spindle made of stainless steel, bushing of brass.

Gasket - rubber profile.

4. SURFACE TREATMENT

Painted with epoxy primer SWA 7423-014-250.

Hot-dip galvanised on request.

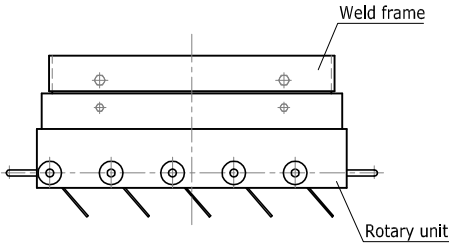
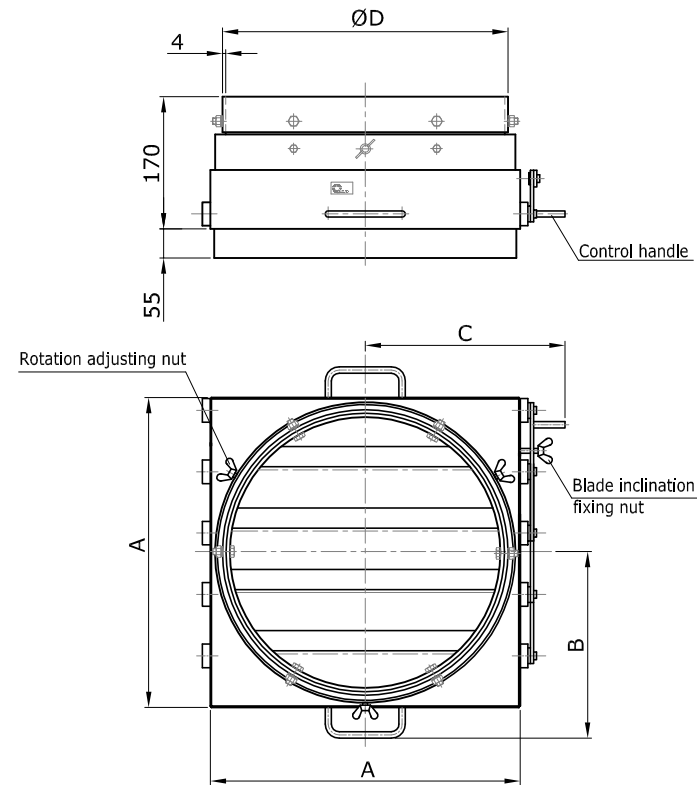


5. MARKING:

Marking of BTV of DN=125 mm:

BULKHEAD VALVE BTV-125

Other sizes on request.



DN	$\varnothing D$	A	B	C	Weight, kg
200	213	244	161	179	7,9
250	263	294	186	204	9,2
315	328	359	220	237	12,8
350	363	394	237	254	14,8
400	413	450	262	280	17,8
500	513	550	320	330	24,2

1. DESTINATION

Rotary air diffusers RAD are destined for installation in ventilation systems of seagoing vessels and offshore objects.

They are used as air distributors in ventilation systems of machinery and technical spaces and allow individual adjustment of air stream direction.

2. CONSTRUCTION

Consist of weld frame and adjustable rotary unit comprising interconnected adjustable deflector blades.

Diffuser to be fixed in requested position by fixing nuts.

Flanged frame for fitting to galvanised duct available on request.

3. SURFACE TREATMENT

Weld frame painted with epoxy primer SWA 7423-014-250.

Otherwise painted.

Hot-dip galvanised execution available on request.

4. SIZES AND TYPES

SIZES: see table

5. MARKING:

Marking of air diffuser RAD of DN=350 mm:

ROTARY AIR DIFFUSER RAD-350

PERFORMANCE CHART

